

ct



mia collaboration tables

8195-Series

coriander 
DESIGNS

ct

mia collaboration tables

options



Anodized Aluminum Toe



P-14 Power Mods
P-16 Power Mods



Mouse Hole &
Access Panel

Combine Mia Collaboration Tables' 7 widths, 3 heights and 4 different depths with 11 different power configurations, to create the perfect meeting space for any environment. Available in Laminate or Veneer Surfaces. Metal Support Leg is available in Standard Powder Coat or a Premium Finish.

8195 mia parsons tables



W: 60/66/72/78/84/90/96
H: 30/36/42
D: 24/30/36/42

Standard Powder Coat Finishes



Graphite



Black



Silver

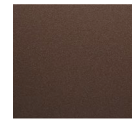


White

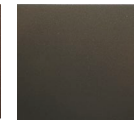
Premium Finishes



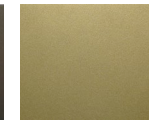
Blackened Steel



Rust



Bronze



Brass

