



ANDO



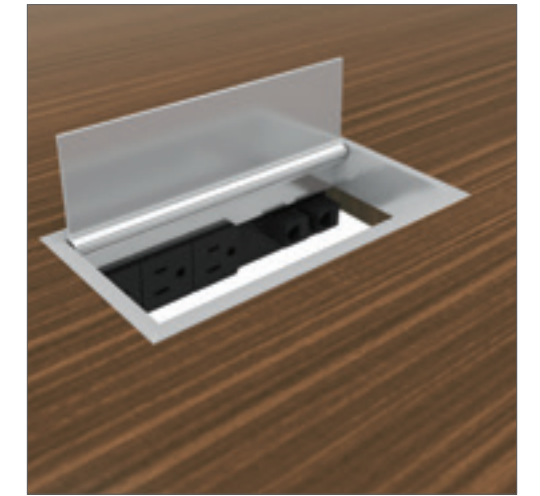
krug

FEATURES



MITERED CORNER

The Ando table worksurface is joined to the side panel legs with a 45° angle miter joint indicative of the highest level of craftsmanship.



POWERPORT

The PowerPort is a worksurface and table-top connectivity solution that can be specified in a range of locations. It includes a UL approved electrical, power bar, containing two 115 - volt electrical Simplex outlets which are accessible from the work surface, plus a utility outlet at the end for daisy-chaining purposes. 3 data versions are available, data can also be custom configured.



HORIZONTAL CABLE MANAGEMENT

This includes a Protective Electrical Cover that covers the power/data module, and is configured to allow additional data ports.



VERTICAL CABLE MANAGEMENT

This optional cabling solution is a clear satin anodized aluminum extrusion that takes cabling to the floor, and enables easy and quick access for making connectivity changes.



All products are air emissions certified and are available as FSC® certified

krug

solutions@krug.ca | www.krug.ca | 1.888.578.KRUG

Ando is the perfect solution for getting people together, wherever that might be: it's sleek and minimal, but with an unmistakable presence. Beautifully made, it features an exquisite mitering detail where the two planes join together. It's available in a range of standard and custom hand-selected veneers and laminates, and a full range of sizes.



