

education

higher education seating solutions



via
SEATING



Via Seating in education

Via Seating delivers seating and additional support such as training room desks for every space within an education environment, including outside areas. Embrace Regola, which allows you to build modular collaborative, lounge and more spaces perfect for open spaces and private escapes. Browse our extensive lounge seating delivering combinations of fixed, rock, swivel & sway motion. Test out our newest nesting and light task series, Reset, which utilizes an ergonomic flex back and easy nest away feature.

LEARNING	3
classrooms	5
technology/media labs	13
science/medical labs.....	17
for law students	19
 GATHERING	21
libraries.....	23
café	27
transitional spaces	31
 WORKING	35
faculty/administration.....	37
conference	39
private offices	41
office lounge areas	43

learning

Today, approaches to teaching and learning are rapidly evolving. A campus today will include many different types of learning-focused environments. These spaces may be designed to support student-teacher interaction, peer-to-peer collaboration or major-specific work.

Via Seating offers solutions for:

classrooms	5
traditional classrooms.....	6
adaptable classrooms	7
lecture classrooms	11
technology/media labs	13
science/medical labs.....	19
law student classrooms.....	21
law student classrooms.....	22





Splash with black mesh backs, arms, arm tablets and upholstered seats in a lecture classroom.

classrooms

Today's classrooms are continuously evolving to keep pace with rapidly advancing technologies and new cutting-edge methods for engaging students. These learning spaces require the ability to continuously adapt the spaces to meet the needs. A single space may need to transition from a traditional forward-facing lecture, to small group activities to a circle round discussion all within a single hour's lesson. These length of these transitions must be minimal to avoid cutting into precious learning time.

- **Traditional Classroom:** learning environments with desks/ tables and chairs placed before a presentation/lecture area.
- **Adaptable Classroom:** malleable learning spaces that can be quickly adjusted on the fly into multiple layouts for individual work, collaborative work, lecture, single & multiple presentation.
- **Lecture Classrooms:** 80+ student lecture-driven classes with limited student-teacher interaction.

traditional classrooms: Sutro

Option to add an upholstered seat and back.

Made of a light-weight moulded polypropylene for easy movement of the chair.

Back cut out is distinct providing an intriguing aesthetic and easy grip for moving the chair.

Available as a 360 degree swivel base with height adjustment at regular height or with a foot ring at tall or extra tall stool height. Also available as a stackable 4-leg side chair.



Sutro
task chair

Sutro with black arm & framework and white poly/plastic shell.





Reset nesting chair with silver high-performance mesh and magnet grey frames.

adaptable classrooms: Reset

Set. Nest. Reset. Easily wheel Reset's light-weight nesting chairs into any arrangement needed. Need open floor space? No problem. Simply lift the seats and tightly nest the Reset chairs in a corner of the room. Reset also offers a height adjustable, 360 degree swivel light task chair & light task stool. All models offer 22 degrees of comfortable flex back.



nesting chair

light task chair

light task stool



Compact nesting

Reset nesting chairs are designed with easy fold-away seats that transition each chair into a compact form. These are easily and tightly nested into one another. They can be rolled and stored away until their next use.



22 degrees of flex back

Reset's framework allows for a comfortable 22 degrees of flex back at the hip. The smooth and supportive flex feature allows the back to relax. It also lifts the chest enabling deep breath.



Swopper® custom chair with anthracite frame on rollers.

adaptable classrooms: Swopper®

Award-winning Swopper® is the perfect solution for comfortable and engaging seating. Fit its compact frame anywhere and sit down in motion. Swopper®'s playful movement including 360 degree and vertical user-controlled motion supports a healthy back and spine while. Available on or off rollers at original or extra tall height.



Swopper® Air



Swopper® Saddle



Swopper® Custom
(original or tall)



Swopper® is fun

Swopper® delivers a sitting experience unlike any other. Its convex seat is comfortable. Its smooth mechanisms hidden beneath its sleek framework encourage combinations of vertical bouncing, side-to-side swaying, 360 degree rotation to the left or right, forward and backward tilt. It can also be held perfectly still by simply sitting still.



unique Swopper® Air fabric

Swopper® Air uses a special, high-tech cushioning with new, climate-active cover for feather-soft sitting comfort. Five perfectly matching functional layers provide a lasting breathable, pressure-relieving and heat-regulating sitting.



Splash chairs with black high-performance mesh, black poly/plastic shell, black arm tablet, chrome framework.

lecture classrooms: Splash

Arrange them any way you would like. Splash chairs are great for brainstorming and group projects. Paired with the desk, Splash can be arranged into a lecture space. Easily stack both out of the way.



desk

chair



High-density stacking

Splash chairs & desks are light-weight and are built to support high-density stacking. Chairs stack 20 high on the ground and 40 high on the optional cart. Desks stack 10 high on the ground and 20 high on the cart.



Versatility

Splash offers flexibility in design. The stackable chairs are available with or without arms. It can be built with a poly, mesh or upholstered back with a poly or upholstered seat.



Reset light task chairs & stools with magnet grey framework and high-performance silver mesh.

technology/media labs

Advances in technology have created new environments that support better learning, innovation, collaboration and engagement. The multi-functional, computer-driven spaces require a variety of different areas for different functions served by different types of seating.

Requirements for these spaces include:

- Use of labs with set hours or 24/7 use (more on page 17).
- Ability to use these spaces for occasional or scheduled classroom use.
- Areas for teamwork and collaboration.
- Large and small areas for presenting.
- Areas away from computers for reviewing and producing.

technology/media labs: Reset

Customize with a screen print logo.

22 degrees of flex back at the hip. The smooth and supportive flex feature allows the back to relax. It also lifts the chest enabling deep breath.

High density, closed-cell, cold-cured, injection-molded foam using Via Seating's proprietary process (backed by Via Seating's 12 year warranty).

Polished, foot ring provides 360 degree support.

Offered with carpet or hard floor casters or glides.



Reset
light task stool

3 height ranges



chair

tall stool

extra tall stool



Genie Copper Mesh® with high-performance copper-infused natural mesh, white framework and silvertex bazaar vinyl on seat.

24/7 labs: Genie®

Discover Genie - a 24/7 task and conference series with heavy duty options up to a 350 lb weight capacity. This gorgeous series is available as a high-performance mesh back. Pair with one of six seat sizes that all fit perfectly within the same black or white framework.



task or conference chair



task stool



High-performance mesh

- 4 way stretch: retracts the mesh to provide stability & expert contouring, which evenly spreads body weight & reduce pressure points.
- elastomeric: provides resiliency & superior support.
- ventilation: mesh allows air, water vapor and body heat to pass through the backrest.



Genie Copper Mesh®

Genie Copper Mesh® uses a biocidal (kills germs), anti-fungal, self-sanitizing, copper-infused mesh on this first-to-market, patent-pending, award-winning chair. The high-performance copper-infused mesh is available in natural and black finishes. Only offered by Via Seating.



Muvman® blue microfiber seat with grey base.

science/medical labs

Whether using a lab for teaching, research or presentation, the needs of a science or medical lab are similar. They must be:

- **Adaptable:** the space must be malleable, able to quickly change the layout into individual work stations, collaborative work areas or presentation/lecture.
- **Appealing:** labs should be as beautiful as they are clean, giving its users pride of ownership and comfort in the space.
- **Efficient:** pathways must remain open and clean, able to be moved through quickly and keep students, researchers and teachers visually connected.
- **Easy to clean:** everything must be designed for thorough and easy cleaning.

Muvman® lab sit-to-stand chair

Easy grip handle, perfect for moving around. Muvman® weighs less than 14 lb.

FLEXZONE: Muvman®'s flexible seat technology and cushioning eliminates pressure points, ensuring free blood circulation and a pleasant seat climate.

Height adjustable at the click of a button beneath the seat.

MUVZONE: 3D, multidimensional, movable joint in the stable base. This allows for smooth vertical, sideways and forward tilt movement.

Grounded by a non-slip rubber rim base-plate that guarantees safe support in every sitting and standing position. The Muvman® for labs has a dustproof and dirtproof cover over the MUVZONE.



Muvman®
lab



Specially designed Muvman® lab seat

- Composition: 86% polyvinyl chloride, 9% polyester and 5% cotton
- Easy-to-clean/wipe able fabric
- Anti-bacterial
- Light-resistant
- Sweat-resistant
- Tear-resistant



Carmel mid back conference chairs with upholstered arm in Via Seating sand (219) leather.

learning spaces for law students

Learning environments for law students branch across traditional learning environments to professional courtrooms.

- **Classroom use only:** may house 100+ people at a time, following either a more traditional (lecture) or modern (adaptable) layout.
- **Conference/Seminar Rooms:** may house 50+ people with seating either around a large conference table or faced toward a single speaker or panel.
- **Courtroom:** may house 50+ people with areas for judges, clerk, defense, prosecution, jury, witnesses and audience.



Sutro



Brisbane



Carmel

courtroom: Carmel

Single and split shell frames available on the mid & high back forms.

Customize with the ability to add embroidered logos and words to the mid or high backs on the front or back of the chair.

6-way adjustable armrest options or fixed arms available with or without upholstery (shown at right).

High density, closed-cell, cold-cured, injection-molded foam using Via Seating's proprietary process (backed by Via Seating's 12 year warranty).

Base options include a 360 degree swivel base (shown at right) on the high or mid back or a bolted to the floor, jury base on the mid back.



Carmel
high back



mid back



high back



jury chair

gathering

Shared areas are abundant across a campus. These common places inspire collaboration, socialization and study. As they often have heavy foot-traffic, frequenters of these areas also seek out private touch down, lounge and rooms.

Via Seating offers solutions for:

libraries.....	5
quiet private zones	6
quiet shared zones.....	7
collaborative zones.....	11
cafés	13
traditional cafés.....	19
modern cafés	19
outdoor cafés.....	19
transitional spaces	22
student centers/student unions ...	19
corridors	19
outdoor spaces	19





Reset light task chairs with blue high-performance mesh, magnet grey framework and brisa original white polyurethane seat.

libraries

Ah the humble library... or not. Today's libraries are a complex and massive hub of constant activity. Its patrons frequent this multi-dimensional space to comfortably meet a variety of opposing needs. Within a single place, one may easily seek out privacy or collaboration, research or brainstorming, technology or ancient knowledge. This complex balances requires versatile, engaging and comfortable seating.

A modern library's ecosystem of learning:

- **Quiet private zones:** enclosed spaces for personal work & focus, silent study rooms.
- **Quiet shared zones:** lounge areas, open research/reading/study tables.
- **Collaborative zones:** team spaces, small conference rooms, tudor rooms.

libraries: quiet private zones

Tall or medium, angled, acoustical panels wrap around and create a private alcove - a single-person room within a room with an efficient, compact footprint.

Sturdy work surface is strategically distanced from the seat to allow for ease of movement in and out of the alcove. The placement provides ample knee space.

Acoustical seat with an open, armless design provides easy access in and out of the alcove.

Ample open space for placing books/bags and resting feet.



Regola
tall alcove



Meteor
lounge

High backrest provides the sitter with comfort and security without visually separating from the room.

Choice of a fixed (no movement) control or Via Seating's motion-lounge experience. The motion options include choice of rocking, 360 degree swivel or side-to-side swaying. Movement while learning can improve focus, provide stimulation, maintain good circulation and aid in memory retention. Movement while sitting allows the learning and focus to continue uninterrupted.



Riva mid backs with black knit mesh and ultrafabrics brisa® fresco coconut with a polycarbonate polyurethane surface/rayon backing.

libraries: quiet shared zones

The more traditional library spaces where students and researchers may sit down at a shared table for short or long term work and study.

Side chairs
for short-term
sitting/work



Sutro

Task chairs
for long-term
sitting/work



Run II

libraries: collaborative zones

Collaboration is the new innovation. It fosters meaningful connections, increases engagement, engineers an exchange of information and balances strengths. Collaborative learning and shared work allows learning and results to flourish. Both offer the opportunity to challenge and solidify beliefs and understanding. Group discussion and shared work results in better, more solidified results with an applied and deeper understanding of the material.

Movement is critical. It relieves stress, improves health and feels natural. Motion in seating allows circulation to flow unhindered, keeps the mind engaged and improves focus.

Collaboration + Movement = Magic. Enter Via Seating's motion-lounge innovator, the Astro soft seating chair. Rock back & forth, sway from side to side and swivel a full 360 degrees in exquisite comfort.



Astro
lounge

Astro chairs with matte black bases.





Orbit chairs, Zee chairs.

café

Coffee bars, cafés, snack areas and dining spaces are peppered across a campus. They can be found in the student union, in a food court, in libraries, in athletic areas and in transitional spaces. These 3 dining environments can be grouped as:

- **Shorter Stay:** These areas conjure up images of traditional dining halls. These areas are open, fast-paced environments with heavy foot traffic. Seating is durable, but informal, supporting short use by many users.
- **Longer Stay:** These areas include coffee bars, areas within libraries and on campus restaurants all with a softer feel. These spaces emphasize comfort, beauty and are enclosed with more options for privacy. Seating is comfortable and encourages a longer stay.
- **Outdoor café areas**

shorter stay: traditional café

Splash

- available with or without arms
- offered in 7 poly/plastic colors
- chairs stack 20 high on the floor, 40 high on the optional cart
- foot rest on stools
- option to upholster back & seat



Sutro

- available with or without arms
- offered in 3 poly/plastic colors
- chairs stack 6 high on the floor, 6 high on the optional cart
- option to upholster back & seat



Zee

- offered in 7 poly/plastic colors
- chairs stack 9 high on the floor, 9 high on the optional cart
- foot rest on stools
- option to upholster seat





Edge chairs, Chico benches.

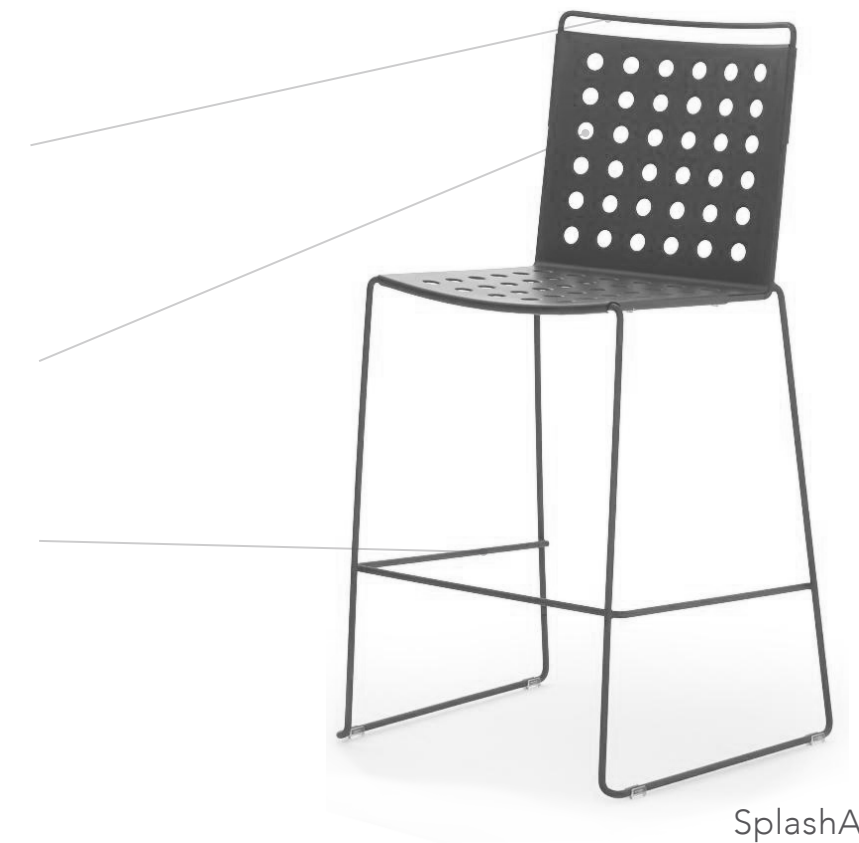
outdoor café

Easy grip handle and light-weight chair encourage movement into collaborative arrangements. Users have greater control over the environment and pride of ownership in their space.

Strategic holes in the back & seat increase breathability in the sit & prevent stagnation of water.

Foot rest on bar & counter height stools.

Chair & bar stool stack 15 high on the ground.



SplashAir stool

SplashAir stackable chair with a white dipped-look finish.

longer stay: modern café



Astro



Comet



Edge



Orbit



Zee



Vista II



Splash



Regola





Regola chairs, coffee tables, touch downs and lounge flowers.

student centers/student unions

A student center or student union is a diverse and large open space used for recreation and socialization. It is the area where prospective students and their families will often first visit and develop impressions of the campus. Student unions may include food courts, bookstores, mail services, lounge/study spaces, game rooms, conference halls, cinemas, meeting rooms and more. It is where many recognized organizations and groups will gather and host activities or campaigns. The student union is the central place of a university.

transitional spaces

In our increasingly mobile and connected world, learning can occur anytime and anywhere. Common, shared spaces between classrooms are becoming active places to engage with peers, study and relax.

Common transitional spaces include:

- **Student Centers/Student Unions:** the central place of a campus for information, meetings and socialization.
- **Corridors:** transitional spaces between classrooms and more that offer opportunities to touch down for short to long periods of time.
- **Outdoor Spaces:** transitional spaces between buildings, areas in front of entrances and exits, safe/well lit environments for night students and stationing bus stops.



Regola



Regola



4u



Regola



Run II



Chico chair, Chico ottoman, Edge chair, Regola couch & Regola coffee table.

corridors

Campus hallways have become functional spaces for collaborating, resting and learning. Students and faculty are able to use these areas to touch down either independently or with others.



Chico

Up to 2000 lb weight capacity.



Sienna



Regola

outdoor spaces

18 mm tubular structure made of hot-dip, galvanized steel. Designed to be used in all environments, including those with extreme weather conditions.

Finishes include 5 epoxy powder coat colors (black, anthracite, white, red, green) or choice of custom colors (conditions apply).

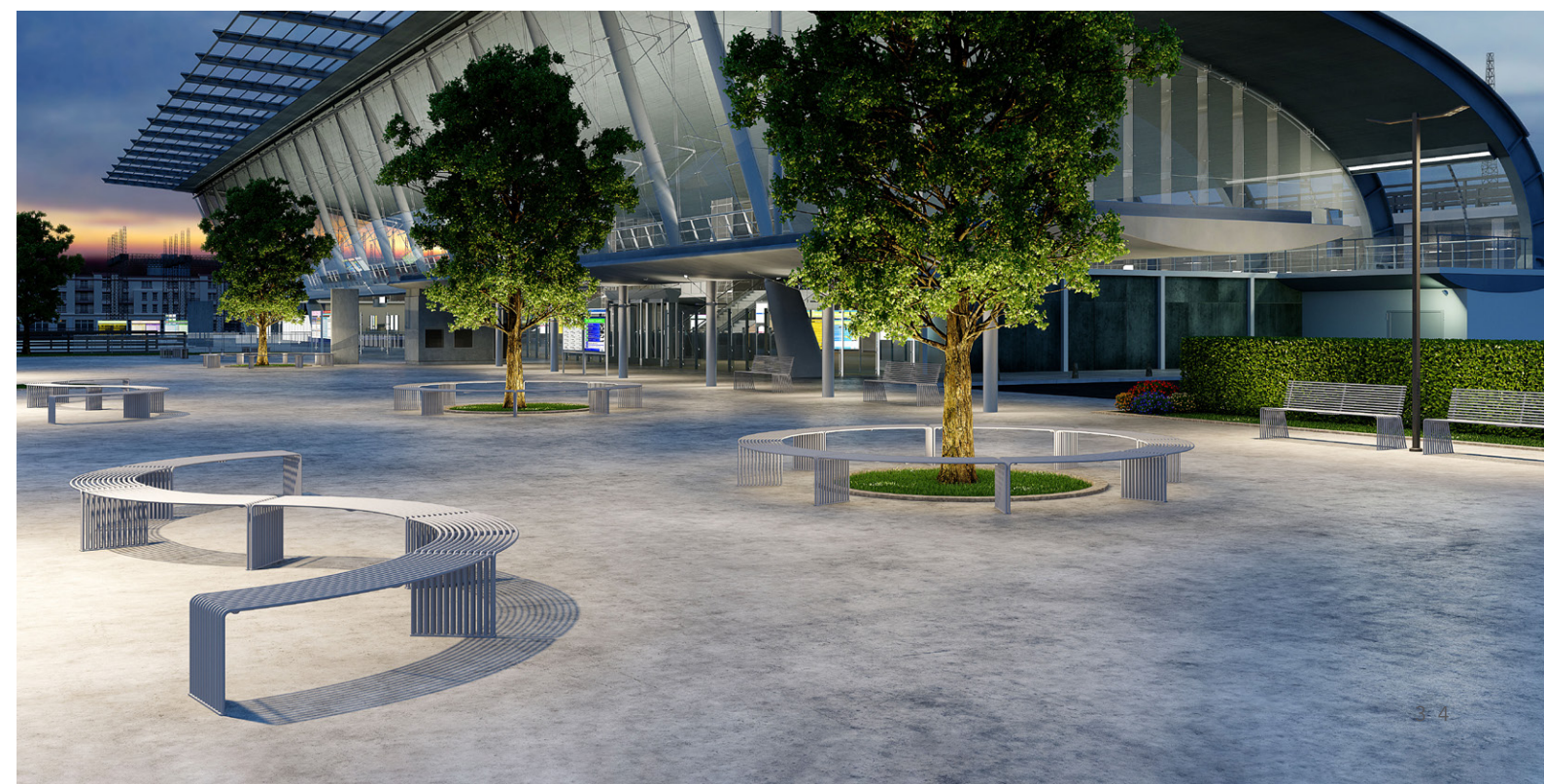
Designed to be bolted to the ground for maximum stabilization and security.

Collection includes chairs, couches, benches, a chaise lounge, litter bins, tables and a functional barbecue.



Sierra
bench

Sierra furniture in white epoxy powder coat with glossy finish.



working

While collaboration may be the new norm, private office is still a critical need of universities and colleges. These spaces are used by faculty, graduate students and student government members.

Via Seating offers solutions for:

open/shared work spaces	39
conference room.....	41
office lounge areas	43
private office	45





Run II mid back chairs with magnet grey framework, grey high-performance mesh and seat

open/shared work spaces

While the nature of work hasn't changed, the ways and efficiencies through which we can achieve it has evolved. Improved technology and elevated demands to produce results faster, quicker and smarter, creates additional mental, physical and emotional stress load. Having a comfortable, easy-to-adjust chair with engineered, intuitive supports is critical.

Essential office chair supports include:

- A comfortable back designed to mimic and support the natural curve of the spine
- A supportive seat shaped to eliminate pressure points
- Intuitive, quickly and easily adjusted control mechanisms
- Adjustable lumbar support
- Adjustable armrest support
- Quality casters correctly paired to the flooring

shared work spaces: task chairs

The person-centered framework design of this glass nylon reinforced frame delivers upper thoracic support and comfort in a smaller workstation.

This 4-way stretch elastomeric mesh retrains the mesh to provide stability & expert contouring, which evenly spreads body weight & reduces pressure points. The elastomeric nature provides resiliency and superior comfort.

6-way adjustable armrest options allow the user to move the arm forward, back, in, out, up and down to adjust the armrest close to the body to rest arms perfectly.



Run II
task chair



4u Groove
task chair

Groove back fabric and slim line design offers a flexible, self-contouring welded fabric that ensures balanced weight distribution (eliminating pressure points) & continuous aeration to the back.

Enhanced body balance control with seat slide is a user-friendly mechanism with:

- 5 position back lock
- Grounded movement when leaning back due to a 3:1 ratio between the seat and back
- Seat slide to help the user achieve an ergonomic 3 fingers depth between the front and back of the chair



Proform® diamond stitch high back in Via Seating black leather (293) with polished cantilever arm, black polyurethane armrest and base.

faculty conference



Carmel



4u



Vero



Reset



Splash



Comet



Edge



Orbit

faculty conference: Proform®

Available as a mid or high back with choice of fixed or ratchet (up & down adjustment) back.

Stitching pattern options include mesh with parallel stitch lines, upholstered with panel stitch lines, upholstered with parallel stitch lines and upholstered with diamond stitch lines.

Fixed arm options include cantilever (shown to right) and loop designs.

High density, closed-cell, cold-cured, injection-molded foam using Via Seating's proprietary process (backed by Via Seating's 12 year warranty).



Proform®
diamond stitch

Proform® parallel stitch mid back in cf stinson staple tempest pvc-free polyurethane with polished cantilever arm and base.





Vero high back with Via Seating black (75) leather and Vero low backs with momentum faux felt pumice polyester.

private office

A single office is a place where leaders are able to make decisions and accomplish focused, individual work. It can be a brief touch down and respite space as executives are often more mobile today, frequently interacting with employees. A private office is also an area for teams to meet and discuss confidential information without outside distractions.

Executive



Vero

Executive guest



Edge

private office: Carmel

Single and split shell frames available on the mid & high back forms. Split shell (shown to the right) paired with a synchro control allows for an ergonomic 2:1 (back to seat) ratio tilt back.

Customize with diamond stitch pattern on the headrest available in matching or contrasting thread colors. This may also be left open or an embroidered logo and/or words can be placed here.

Ergonomic 8-way adjustable armrests (up, down, in & out at cap, back & forth at cap, in & out at sides of seat) available with a black or upholstered cap.

Latest quick adjust advanced synchro control with seat slide features an innovative, single rotation adjustment (no more endless twisting to adjust the chair). Achieve any of the 7 distinct back tensions levels within a single rotation of the handle.



Carmel
high back



exquisite comfort & durability

- Formaldehyde-free 7 layer ply wood for maximum strength.
- Strategically crafted, injection-molded foam through a Via Seating proprietary process.
- Foam is closed-cell (protective outer skin that repels moisture) and cold-cured (maintains consistency in structure throughout foam). Backed by Via Seating's 12 year warranty.



Regola single chairs, Regola double seat couches, Regola leaf chairs.

office lounge areas

Lounge areas matter in a modern office. Employees are increasingly more mobile—able to access the bulk of their work easily from a cell or laptop. The trend to work remotely is increasing, which can limit team engagement, derail productivity and create a silo-effect within a work force. Having access to soft chairs and private alcoves placed in informal arrangements creates that touch of home in the workplace. Lounge environments can also encourage creative, unforced collaborative work.





this is true
quick ship

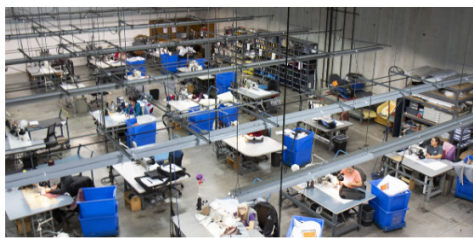
the largest selection of quick-ship in the industry

We don't just have a quick ship program—we're a quick ship company. **Over 95%** of our offerings are quick ship. Compare Via Seating lead times with other quick-ship programs and you'll find we offer the greatest selection of quality seating with the broadest range of options. Our quick ship process is also customized, not prescribed. Our dedicated project experts and customer service team work hand-in-hand with you every step of the way to achieve your project deadlines.

how it works



1 day to process your order



48 hours (2 days) to build it



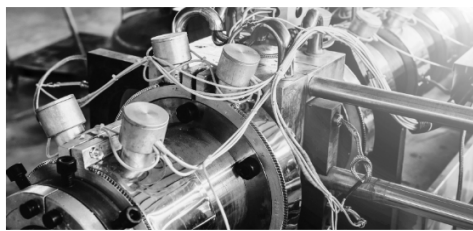
1 day to process & ship it out

it's that simple



proprietary foam technology

Via Seating chairs use closed-cell, cold-cured foam that is injection-molded into strategically contoured seat molds—owned by Via Seating. This proprietary process maximizes on lasting comfort, durability and ergonomic support. Via Seating foam is fully covered under the 12 year warranty.



injection-molded foam

Via Seating foam is sculpted to provide body balance technology built directly in the cushioning of the seat and back. It is injected into an engineered mold at controlled, differing rates, which creates strategic, multi-density levels within each cushion. This process builds a subtle seat contour that maximizes support exactly where it is needed—where body weight is most concentrated. The outer edges by contrast, are made softer and in a waterfall slope so that the seat does not restrict circulation where the legs extend out over the edge of the seat.



closed-cell cold-cured technology

Closed-Cell refers to the fact that the foam has a smooth outer skin that is kind to fabric. It does not rasp on the upholstery from the inside. The foam does not absorb moisture. It protects the foam over time and does not break down. The comfort of **Via Seating** foam has the same comfort 12 years later.

Cold-Cured refers to the consistency in size of the air cells within the foam. The foam is one single, contoured and resilient piece of foam. It is not layered foam.



expertly tested & durable

Via Seating uses a resistance factor test and measurement of density to assess the durability and quality of its foam.

Density/volume weight gives an indication of the foam's ability to resist weight and not "bottom out". Good foam must provide resistance in direct proportion to the amount of pressure applied. This unit of measurement does not necessarily translate into hardness but rather the feeling of support you receive when you sit on the foam.

Via Seating foam has an average density or volume of **3 pounds per cubic foot** (48 kg/m3). Standard flat foam, by comparison, has a single volume weight between 1.9-2.25 pounds per cubic foot (30 to 40 kg/m3). The greater density of **Via Seating** foam makes it best-suited for office ergonomic seating

seating solutions in this book



4u (page 32, 38, 39)

- mesh back (4-way elastomeric stretch), upholstered or groove (hybrid between a mesh & upholstered back)
- task/work chair, task/work stool or conference chair
- 2 distinct seat styles—original slim line design with seat pan and new extra comfort seat with extra height in the cushioning of the seat.



Comet (page 29, 39)

- Cradling back for privacy, comfort and support.
- Choice of fixed chair or motion-lounge rock back and forth, sway from side to side and swivel a full 360 degrees is exquisite comfort.
- Applications include lounge, collaborative, guest and conference seating.



Astro (page 22, 26, 29)

- High profile back offers privacy and support.
- Choice of fixed chair or motion-lounge rock back and forth, sway from side to side and swivel a full 360 degrees is exquisite comfort.



Edge (page 29, 33, 39, 41)

- Bespoke design, with multi-upholstery layouts and choice of contrasting thread colors across back and seat for extensive customization.
- Applications include lounge, collaborative, guest and conference seating.



Brisbane (page 19)

- High or mid back options with choice of five seat sizes—petite to large.
- Choice of active back or bio-sync ergonomic controls.



Genie® (page 15, 16)

- Featuring a quick adjust advanced synchro control that uses single rotation adjustments for the back.
- 6 seat sizes—petite to extra large—built to fit within the same frame design maintaining that beautiful aesthetic.
- Heavy duty, 24/7 use applications with a weight capacity of 400 lb on synchro controls 67C, 67CSS.



Carmel (page 19, 20, 39, 42)

- All models have a gorgeous, tuxedo stitching down the front and back with option to add a diamond stitching pattern to the headrest.
- High or mid back models available in single shell (for 1:1 ratio rocking back/conference applications) or split shell (for a more ergonomic 3:1 ratio synchronized movement).



Meteor (page 24)

- Cradling back offers privacy and support.
- Choice of fixed chair or motion-lounge rock back and forth, sway from side to side and swivel a full 360 degrees is exquisite comfort.
- Available on a variety of bases in polished, matte black or silver finishes.



Chico Benches (page 29, 33, 44)

- Available as low-profile, 40" long or 60" long models.
- Loop legs are available in polished or brushed finishes.
- Intensely durable with a steel plate housed beneath the seat that has a weight capacity of 1000 lb on the 40" long bench or 2000 lb on the 60" long bench.



Muvman® (page 18)

- Sit/perch/stand available in regular & tall heights, both perfect for desks, counters or sit-to-stand desks.
- FLEXZONE technology flexible seat technology and cushioning ensuring free blood circulation and a pleasant seat climate.
- 4 degree ergonomic, permanent tilt to extend reach.



seating solutions in this book



Orbit (page 27, 29, 39, 44)

- Bespoke design, with multi-upholstery layouts and choice of contrasting thread colors across back and seat for extensive customization.
- Applications include lounge, collaborative, guest and conference seating.



Proform® (page 39, 40)

- 4 back styles are mesh with parallel stitch lines, upholstered with panel stitch lines, upholstered with parallel stitch lines, upholstered with diamond stitch lines.
- Available as a mid or high back.
- Applications include task, task stool, conference, executive and management.



Regola (page 24, 29, 31, 32, 33, 36)

- Offers a variety of acoustical, modular furniture pieces that connect through a simple button & bracket system
- 4 optional seats, 4 optional panels, 11 surfaces and many accessories including file holders, tv mount brackets and more
- Functional power & USB hook up on work surfaces



Reset (page 7, 8, 13, 39)

- Flex-back (to 22 degrees) high-performance mesh available in 9 colors including copper mesh with option of screen print logo added to mesh.
- Seat is a high density, closed-cell, cold-cured, injection molded, CFC-free, foam using Via Seating's proprietary process (backed by Via Seating's 12 year warranty).
- Armless or optional arms in black or magnet grey finishes



Run II (page 25, 32, 37, 38)

- Mesh available in 7 color including eye-catching blue & orange patchwork mesh patterns.
- Offers two seat sizes—medium and large.
- Models include high back, mid back, task stool and side/guest chair.



Sienna (page 33)

- Available as single seat chairs, double seat couches and triple seat couches.
- Arms styles are as club or universal style with optional permanent black or natural maple arm tablet.
- Feet in black or natural maple finish with optional casters on single chair with universal arms.



Sierra (page 34)

- Collection includes chairs, couches, benches, a chaise lounge, litter bins, tables and a functional barbecue.
- For use in outdoor environment including those with extreme heat, humidity & salt water air.
- Designed to be bolted to the ground for maximum stabilization and security.



Splash (page 5, 11, 12, 28, 29, 39)

- Collection includes a stackable side chair, a bar or counter height stool, a light task chair, a light task stool and a table
- Poly & soft backs available in 7 colors, mesh backs available in 3 colors. All offer a poly or soft seat.
- Optional book racks and arm tablets.



SplashAir (page 30)

- Strategic holes in the back & seat increase breathability in the sit & prevent stagnation of water.
- Frame offered in dipped-look finishes of black, anthracite, white and red.
- Easy grip handle on the chair and stool backs.
- Chairs and stools stack 15 high on the ground.



Sutro (page 6, 19, 25, 28)

- Collection includes a stackable side chair, a light task chair, a light task stool.
- Choice of armless or versions with arms.
- Optional casters on side chair.



seating solutions in this book



Swopper® (page 9, 10)

- Available as a round or saddle seat.
- Offered at regular or tall heights - perfect for pairing with sit-to-stand desks.
- Delivers user-controlled vertical, side-to-side, forward tilt and 360 degree rotation motion.



Vero (page 39, 41)

- Applications include high back, mid back, low back.
- Design is distinct horizontal lines with cushions strategically placed for ergonomic comfort.
- Arms options include sleek, fixed loop arms available in black matte and polished versions with black or upholstered cap additions.



Vista II (page 29)

- Available as a stackable side chair, bar stool or bariatric.
- Backs available as poly, mesh or soft.
- High-performance mesh available in 9 colors including copper mesh.
- Optional casters of side chair.



Zee (page 27, 28, 29)

- Available as a stackable side chair with 4-leg or sled base options, bar or counter height stool, light task chair, light task stool, guest chair with wood base.
- Chair offered in 7 finishes.
- Optional transportation cart stacks chairs 9 high or soft chair 7 high.







SEATING

a great chair
a great world

community + earth-conscious + energy-saving + ethical + handmade + humanitarian + sustainable

At Via Seating, we believe great things happen in a chair. We understand that to make this happen, it takes a lot more than creating a great chair. Discover how we're committed to developing a greater, more inclusive workplace, a greater, more sustainable environment, and greater, more enriched communities.



All Via Seating chairs participate in our take back program.



Efforts include our enriching engineering internship program, and leftover textile donation program.



As part of our Design for the Environment (dFe) program, we use environmentally-safe, highly recyclable materials in our products.



All Via Seating products are BIFMA LEVEL® 2 GOLD and Clean Air GOLD certified.



education

higher education seating solutions

Please visit our website to find your local representative and browse additional education seating solutions.

www.viaseating.com

toll-free: 800-433-6614

phone: 775-331-6001

email: info@viaseating.com

Via Seating 205 Vista Boulevard,
Sparks, Nevada 89434



© Via Seating 2019