

Reset

nesting & light task seating




via
SEATING

great things happen in a chair

Set. Nest. Reset.

Set the room to meet
your needs with Reset.

Reset leads with a light-weight, slim frame, flex back, mesh back, multi-use seating solution on a gorgeous 4-leg or 5-star swivel base.



Nest with ease

The Reset series delivers a high-density nesting solution, perfect for storing away chairs to meet the shifting needs of collaborative and learning spaces.



Work in style

Reset delivers an eye-catching and comfortable light task chair and stool.



features

- Engineered flex back mesh (22° flex back).
- Available with or without arms.
- Light-weight, slim frame design.
- High-density nesting function.
- Optional tall or extra-tall task stool.
- Includes option of biocidal copper mesh.
- 12 year warranty (5 years for mesh).



Design by
Studio V

Studio V creates modern, sophisticated and original seating solutions that are ergonomic, beautiful and sustainable. This team of engineers and designers

is based in Reno, Nevada, where they develop products using a prototyping lab, the latest in 3D modeling software and a materials testing center.

options

breadth of line



Nesting chair.



Light task chair.



Light task stool.

task bases



Black nylon 5-star base.



Magnet grey nylon 5-star base.



Polished aluminum 5-star base.



Brushed aluminum 5-star.

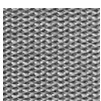


← Each base can pair with a stool kit/foot ring.

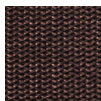
mesh colors



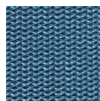
Black.



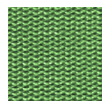
Silver.



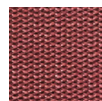
Chocolate.



Blue.



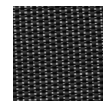
Green.



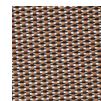
Cardinal.



Orange.



Black copper.



Natural copper.

frame finishes



Black.



Magnet grey.



Please visit our website to find your local representative and browse additional options for this series.

VIASEATING.COM | 800.433.6614

© Via Seating 2020

via
SEATING