



JORDAN
RECLINERS

krug

HEALTHCARE SOLUTIONS



JORDAN 3 POSITION RECLINER



The 3 Position Recliner is our most popular model - it's been re-designed and enhanced with additional cushioning and bolstering in the back and seat, providing lumbar and thoracic support for exceptional comfort and support for lengthy sitting and reclining. Back and footrest are adjusted with body weight of the patient, or by the caregiver. And its a workhorse with a superb mechanism and an incredible track record of continuous, problem-free use. Shown with Central Caster Locking option.

JORDAN SLEEP RECLINER



The Sleep Recliner features the same enhanced cushioning design for comfort and support, and the infinite back positioning allows the patient to recline from sitting to a full sleep position. Back and footrest are adjusted with a side-mounted lever that can be operated by the patient or caregiver. Trendelenburg (and other options) are available. Shown above with Central Caster Locking option.

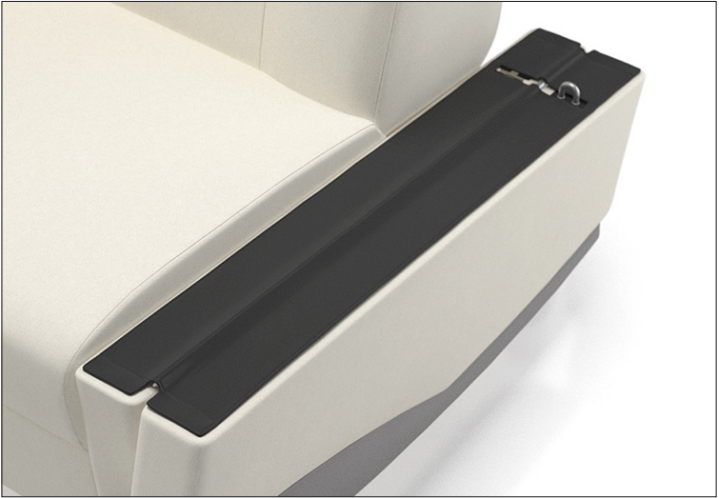


JORDAN BARIATRIC RECLINER



Spacious and comfortable, the Bariatric Recliner features an interior seat/back width of 28.75", and a weight rating exceeding 500 lbs. Back recline and footrest are adjusted with a side-mounted lever that can be operated by the patient or caregiver. Shown with optional Central Caster Locking System.

JORDAN INFUSION RECLINER



The Infusion Recliner is designed particularly for treatment applications: chemotherapy, and other treatments where extensive time may be spent in the recliner by the patient. The Cushioned Armrest (optional), combined with enhanced seat and back cushioning and bolstering, help reduce patient fatigue - and Thermal Comfort (optional) provides soothing warmth to ward off the chilling cold that patients can experience during treatment.



CUSHIONED ARMREST

The Infusion arm was designed to maximize patient comfort during infusion treatments. The extra padded and wider arms provide comfort and support over long periods of time. Arms can be ordered in Krug standard healthcare rated gray vinyl or in coordinating patterns.

PATIENT TRANSFER ARMS

Patient Transfer Arms are designed to fold down where the arm is level with the chair seat. This design allows the caregiver to easily transport patients from the chair to bed. Patient Transfer Arms are not available on Bariatric Recliners.

**TRENDELENBURG POSITION**

The Trendelenburg position is an option that utilizes a foot-activated lever to raise the patient's feet above the head. Arms on 3 Position models are stationary during Trendelenburg activation and arms pivot with the seat and back when activated on Sleep Recliner model. Trendelenburg is not available on the Bariatric, Compact and Active Patient models.

HIGH DURABILITY MECHANISM ^S

Jordan Recliner mechanisms are designed for high-traffic, intensive use in caregiving environments. They are built with high-strength steel, and include Delrin™ wear pads between moving components for added smoothness and longevity.

ENHANCED CUSHIONING ^S

The Jordan Recliners have been upgraded with a softer seat, a more pronounced headrest, and contoured back shaping for improved support. These enhancements, along with the addition of dual-density foam, make these recliners the leader in patient comfort.

POWER CONTROL

Control which operates the back and ottoman simultaneously. Sleep Recliners feature independent back and ottoman control.

SWING AWAY TABLET

The tablet has the ability to flip up and fold over and rotates 180°. The break-away design allows for the tablet to be pushed away from the patient quickly in case of an emergency.

CENTRAL CASTER LOCKING SYSTEM

Allows for single action locking of all 4 casters at one time. Casters are locked both directionally and rotationally, keeping the recliner in place when locked. The color-coded external foot pedal indicates Red for the locked position (when lowered) and Green for the unlocked position (when unlowered). The standard position for the foot pedal is located at the rear outside of the left (facing) arm panel. It can optionally be located at the front outside of the arm panel (either side) or at rear of right (facing) arm panel. The Central Caster Locking System is not available on the Sleep Recliner with Trendelenburg, Compact and Active Patient models.

PUSH BAR

This is a standard feature on the Jordan recliner, ergonomically designed to assist caregiving staff in the movement and operation of the recliner, and reduce back strain on the caregiver.

IV POLE

The Jordan IV pole is height adjustable, and can be added in any of four locations (left or right, front or back) - if ordered with the recliner, the location must be specified at time of order.

THERMAL COMFORT

Providing warmth to patients under going chemotherapy and other treatments can be vitally important. Thermal Comfort is operated by controls on the inside arm of the recliner. It provides two heat zones: one in the seat and one in the back. Back and seat zones can be controlled independently, at a high or low heat setting. Thermal Comfort features a safety time-out that automatically shuts off heat after 30 minutes of use.

BACK ADJUSTMENT LEVER ^S

The Back Adjustment Lever is standard on Jordan Sleep, Bariatric, Compact and Active Patient Recliners and provides infinite rest positions within the range of the back recline.

FOOTREST LEVER ^S

The Footrest Lever extends and closes the built-in footrest on Sleep, Bariatric, Compact and Active Patient Recliners. The footrest on 3-Position and Infusion Recliners is activated by reclining the back.

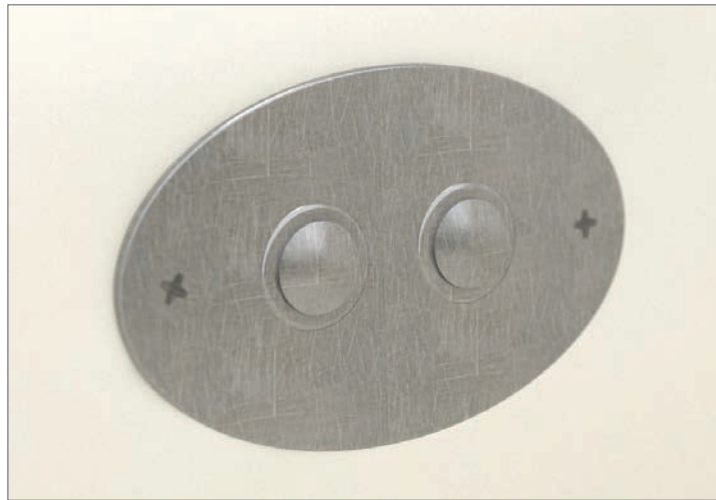
FOLEY HOOK

This recessed, retractable hook system provides a mounting system for catheter bags. It is spring-loaded to automatically retract when not in use, to eliminate any hazard.

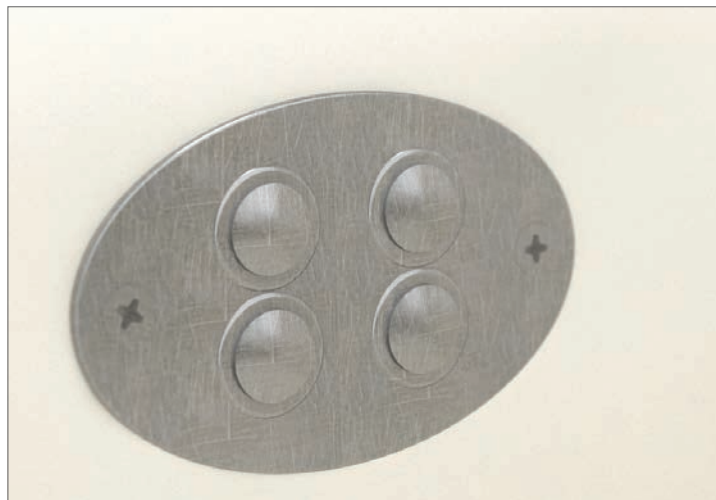
STANDARD CASTER ^S

The standard caster is 4" in diameter, soft wheel, full swivel, with a lock that in a single action locks both the swivel and rotation of the caster. The Central Locking caster has the same features, with a hooded design. (Note: Active Patient Recliner casters are different size and function - see page 16 for this version).

JORDAN POWERED RECLINER



2 BUTTON CONTROL
 Featured on the 3 Position Recliner by simultaneously opening the back and ottoman with one button and closes them with the other.



4 BUTTON CONTROL
 Featured on the Sleep Recliner and independently opens/closes the back with one set and opens/closes the ottoman with the other set.



With finger-tip controls, the Powered Recliner enables patients and caregivers to effortlessly adjust the position of the patient within an infinite range - providing an element of freedom to both patients and nursing staff.



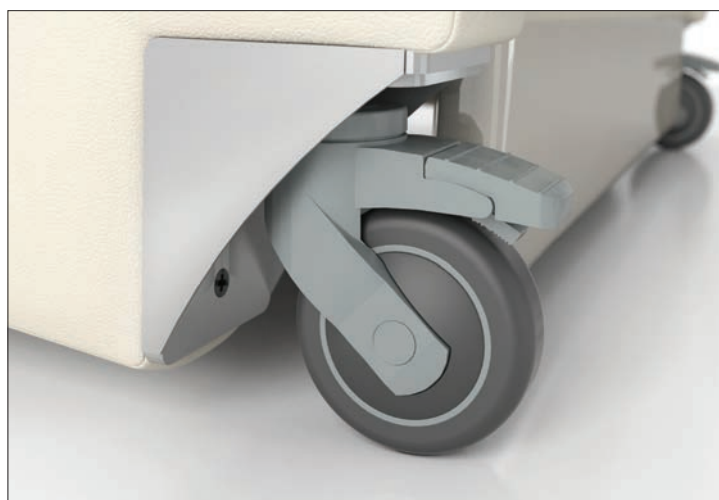


JORDAN COMPACT RECLINER



The Jordan Compact Sleep Recliner boasts all of the comfort and features of the Jordan Sleep Recliner in a scaled down package and is the perfect solution for patient rooms and treatment areas where available space and freedom of movement are important. It features a smaller overall footprint and a 21" seat width and maintains comfortable proportions for extended sitting, resting and treatment.

JORDAN ACTIVE PATIENT RECLINER



The Active Patient Recliner provides a full range of features for patient use and comfort: despite a smaller overall scale and footprint, it's comfortable interior dimensions make it an excellent solution wherever space is at a premium. It offers an integrated (optional) arm cap in a range of colors, an optional Patient Transfer Arm (which can be specified on either side), and front-mounted, lockable casters to facilitate movement.

Nightingale Awards



silver





FEATURES & OPTIONS



REPLACEABLE COMPONENTS

All of the components - the seat, back can be removed for cleaning and all components including arm caps, casters and the mechanism can be replaced if damaged.



REMOVABLE/REPLACEABLE COVERS

Removable seat and back covers can be quickly installed on Jordan products that were originally ordered with the Removable Cover Option. Removable seat and back covers can also be installed on Jordan products that were not originally ordered with the Removable cover option, with some simple staple removal on the original seats and backs.



THERMAL COMFORT

Providing warmth to patients under going chemotherapy and other treatments can be vitally important. Thermal Comfort is operated with a hand-held controller located on the inside arm of the recliner. It provides two heat zones: one in the seat and one in the back. Back and seat zones can be controlled independently, at a high or low heat setting. Thermal Comfort features a safety time-out that automatically shuts off heat after 30 minutes of use.



SWING AWAY TABLET

The tablet has the ability to flip up and fold over and rotates 180°. The break-away design allows for the tablet to be pushed away from the patient quickly in case of an emergency.



FOLEY HOOK

This recessed, retractable hook system provides a mounting system for catheter bags. It is spring-loaded to automatically retract when not in use, to eliminate any hazard.



IV POLE

The Jordan IV pole is height adjustable, and can be added in the field. It can be located in any of four locations (left or right, front or back) - if ordered with the recliner, the location must be specified at time of order.

For additional information, images and specifications for each of the Jordan Recliners, please refer to their individual product brochures as well as the Healthcare Specification & Price Guide.



The mark of responsible forestry



All products are air emissions certified and are available as FSC® certified

Ver. 2 2019

BCJRCOMBO2019

Printed in Canada