

SOLIS



krug

HEALTHCARE SOLUTIONS



The result of an intensive, multi-year research and development process, Solis is one of the most advanced seating designs ever created for healing environments.

Using evidence-based design, Solis has been created to address the complex criteria cited by specifiers, patients and caregiving staff for furnishing healthcare facilities.

Solis' unique combination of infection control features, durability and replaceability, supportive comfort, range of models and sizes, and range of aesthetic options, makes it the pre-eminent solution for public areas, waiting areas, patient rooms, and treatment areas.

A total of four seat sizes - 21", 24", and the 30" and 44" bariatric sizes, along with two back heights - allow spaces to be configured for all shapes and sizes of people - and be easily reconfigured as needs and spaces change.



SOLIS MULTIPLE SEATING

Solis is a heavy-duty product, designed to stand up to the use and abuse that occurs in intensive-use environments. Backed by a lifetime warranty, it features highly durable materials and construction - and is designed for extended product life, through the replaceability of its components. Metal side frames, as well as both wood and urethane arms, can be field-replaced if damaged. Complete seats and backs can be field-replaced when worn out or damaged.

In the battle for infection control and healthy healing environments, Solis offers an impressive array of features. Removable upholstery covers are available, which can be removed and cleaned - or replaced, allowing the life of the product to be significantly extended. Mesh backs are removable, for cleaning or for replacement. When combined with anti-microbial upholstery, all surfaces can feature anti-microbial finishes, and the optional Splashguard protects the underside of the seat from pathogens and moisture.



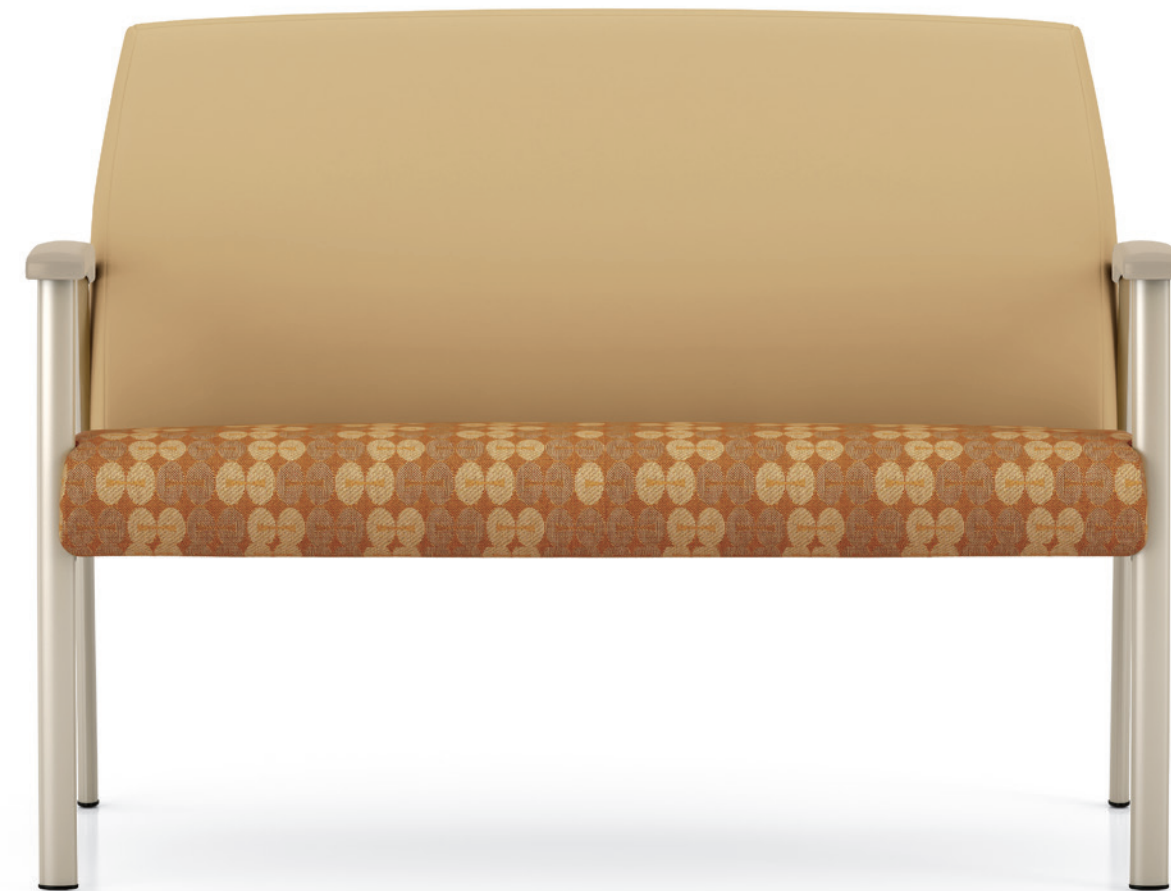
SOLIS GUEST



Freespan seating, offered in both 2- and 3-seaters, with or without interior arms, is an attractive and economical solution for waiting areas. Mobility is aided with the option of either 2 or 4 casters on Solis seating.



SOLIS BARIATRIC GUEST



Solis seating exceed the 500 lbs weight rating. Solis Bariatric seating has a seat weight rating of up to 750 lbs, and a back weight rating of up to 450 lbs.

Exactly duplicating the contours, dimensions and comfort of our Jordan seating, Solis is designed to encourage a healthy sitting posture, and assist in the ease of ingress and egress - with exceptional comfort properties for long-term sitting. Seats are made with Krug's proprietary "no-sag" spring suspension, which provides superior comfort by allowing the seat to compress without bottoming out - while greatly enhancing the durability and life cycle of the product beyond that of conventional seats. Seat fronts are precisely shaped to ease muscle strain on legs when seated for longer periods. Backs - both mesh and upholstered - are contoured to provide comforting lumbar and thoracic support.



SOLIS PATIENT & BARIATRIC PATIENT



Solis metal frames have a unique and eye-pleasing oval shape that gives the chair an attractive lightness in appearance, belying its sturdy and durable heavy-gauge steel construction.



SOLIS EASY ACCESS



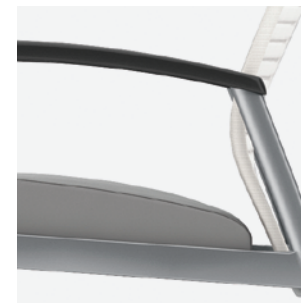
With the larger footprint of this chair, and the critical importance of stability for the user, we have included adjustable glides on the front legs - this allows the Easy Access chair to be perfectly leveled to any floor for maximum safety and stability.

SOLIS FEATURES



ANTI-MICROBIAL FINISHES

Metal finishes are available with a Microban anti-microbial coating, which inhibits the growth of germs, microbes and bacteria. Wood and urethane arms, and wood side rails, come standard with anti-microbial materials.



CLEAN OUT

All Solis seating models have a built-in clean out feature: a space at the back of the seat that allows dirt, liquid and debris to fall to the floor for easy clean up and maintenance - designed so that it does not detract from the comfort or appearance of the product.



REMOVABLE SEAT & BACK COVERS

This option enables upholstery covers to be removed for cleaning and repair, or replacement. Complete seats and backs can be replaced. Mesh backs can be removed (on their frame) for cleaning, or replacement.



FLEX BACK

The ergonomically-designed back has a slight flexing action, which significantly enhances comfort and can be beneficial and pleasing for patients who are seated for long periods.



HIGH DENSITY FOAM

Solis features dual density foam that is soft on the outside for comfort, dense on the inside for high durability and long life. The seat and back feature compound curvature that support a healthy sitting posture, while also designed to ease ingress and egress.



WOOD SIDE RAIL OPTION

Solis can be specified with solid wood side rails, which, along with the selection of wood arms and a choice of metal finishes, provides a warmer look and feel. All Solis wood components feature Krug's anti-microbial, high-durability Enduraguard finish.



REPLACEABLE COMPONENTS

Solis is engineered for long life, with the unique ability to field replace all of the components individually, if they become damaged or degraded. This includes seats, backs, arms, side frames, upholstery covers, and the Solis under-seat Splashguard.



WALL SAVER

On all versions but the mesh patient back, the angle of the back and rear legs are designed to prevent the back from impacting and damaging walls and partitions, as well as preventing damage to the chair back.



URETHANE ARM

Solis arms are durable, comfortable, and long lasting. They are made with Silver Ion anti-microbial technology throughout the arms, so the anti-microbial properties are effective even if the arm is nicked, or cut into. Urethane arms are available in three color options; Black, Grey and Taupe.



SPLASHGUARD

The optional Splashguard is a formed plastic cover that mounts on the underside of chair seats, acting as a barrier to the penetration of moisture and other substances, while allowing air transfer and ventilation within the seat cushion. Its smooth surface is easy to clean, and its protection greatly enhances overall cleanliness and infection-control efforts.



ADJUSTABLE HEADREST OPTION

The Patient chair adjustable headrest uses dual density foam providing excellent support and comfort. It is securely fastened using an innovative clip allowing the headrest to be easily removed for cleaning and/or replacement.



EASY CLEAN BACKREST COVER

Backrest covers are available on both mesh and upholstered backs. They are removable, replaceable and cleanable. The Easy Clean Backrest Cover features a foam interior for comfort and durability.



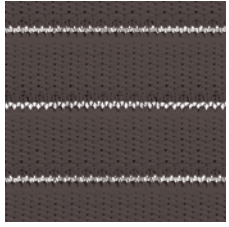
Solis is certified under the rigorous Greenguard™ indoor air emissions standards for furniture, ensuring that it is a safe and healthy choice for patients and caregivers alike. And the extensive use of recycled and recyclable materials makes Solis a positive contributor to sustainability, including LEED specifications.

With Solis' graceful curves and wide range of options - metal finishes, mesh and upholstered backs, wood and urethane arms, upholstery options and more - durable metal seating can finally be made warm, inviting and beautiful!

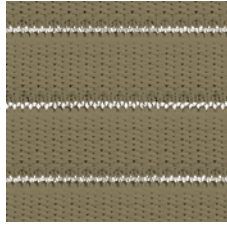


SOLIS TABLES

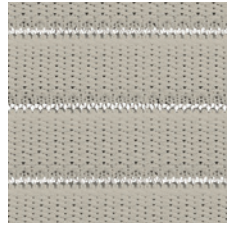
STOCKED MESH COLOR OPTIONS



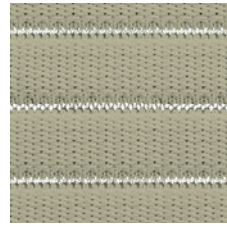
Slate



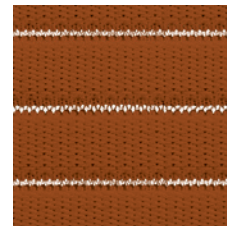
Olive



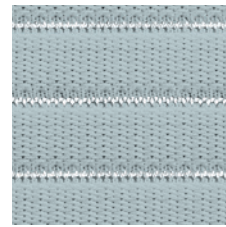
Warm Grey



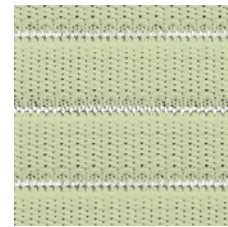
Earth



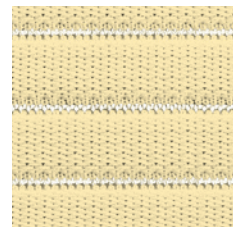
Terra



Sky



Celery

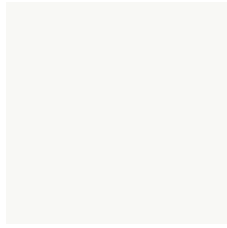


Sand

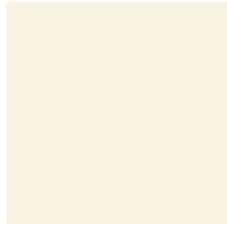
METAL COLOR OPTIONS



Silver Metallic



White



Parchment



Sand



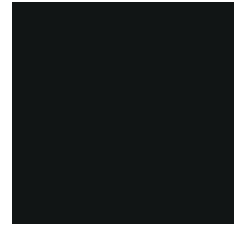
Taupe



Warm Grey



Cool Grey



Black

Silver Metallic finish is at standard pricing, upcharge applicable for other finishes.



FSC
www.fsc.org
FSC® C021699

The mark of responsible forestry



All products are air emissions certified and are available as FSC® certified

krug

solutions@krug.ca | www.krug.ca | 1.888.578.KRUG