

# ADD SOFT

Francesco Rota | 2018



# ADD SOFT

Francesco Rota | 2018

Softness is possible. And you can imagine an office that accommodates wide and spacious seating. Time for meetings or simply more time, as at home. In the name of relaxation, the ADD SOFT seating system adds depth and opens up to the most successful art of combinations. With its embracing dimensions, the legs of the frame are reduced in height to make space for comfortable cushions. The tabletops with electric sockets complement the functionality of the sofa. And it is a pity to get up from it.

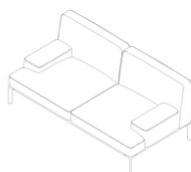




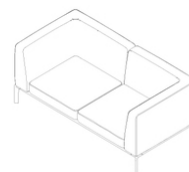
Coffee Table



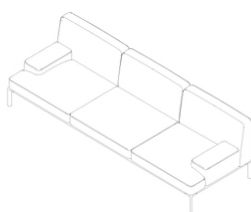
Pouf



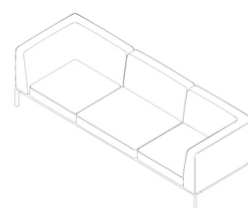
Two seater — low



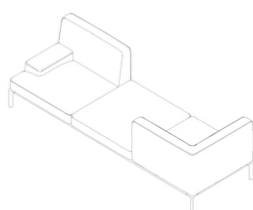
Two seater — high



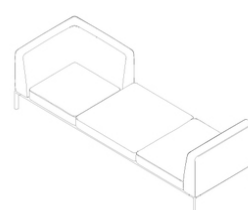
Three seater — low



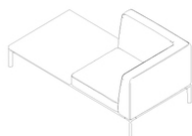
Three seater — high



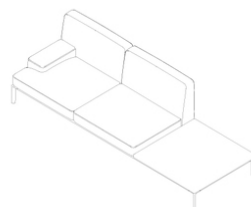
Vis-à-vis



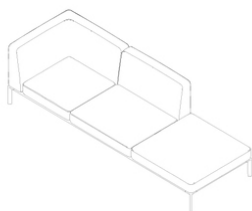
Vis-à-vis - 2



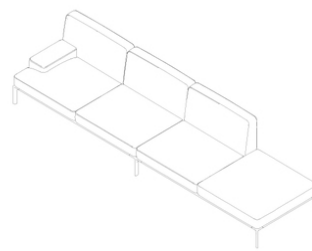
One seater high + table



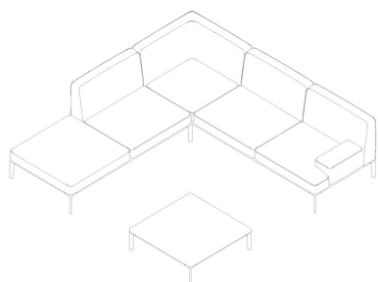
Two seater low + table



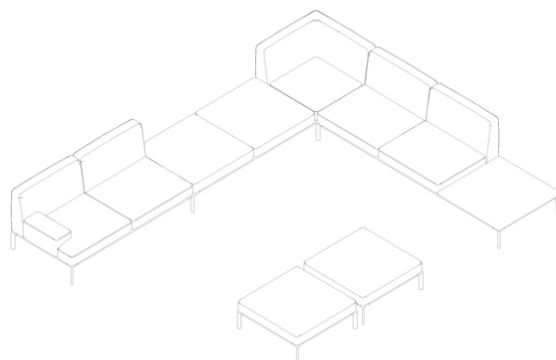
Three seater high — open



Side by side — open



L\_shape small — open



L\_shape big — open

# ADD SOFT

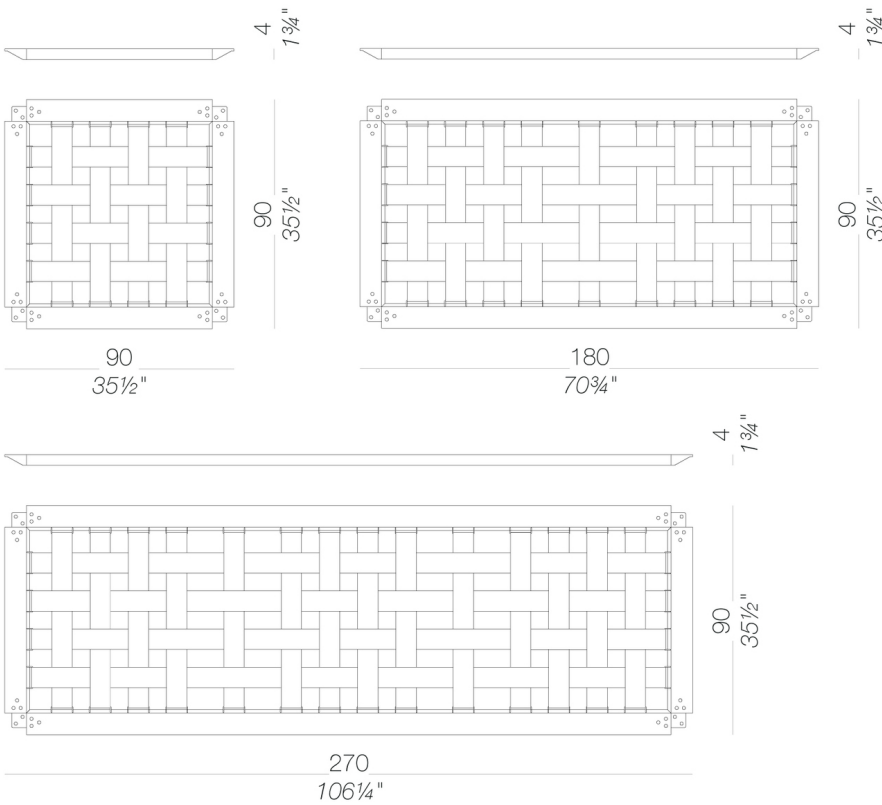
Francesco Rota | 2018

Modular seating system with powder coated aluminium frame and webbed elastic support. Two types of legs in recycled die-cast aluminium, one for the corners and another to connect frames for larger configurations. Backrests and accessories can be fixed to the frame in several positions by using existing holes. Cushions and backrest in polyurethane foam with variation in density and polyester fiber, all fire-retardant, upholstered with removable fabric, soft leather or eco-leather. ADD is complemented by tops in various finishes, also with sockets. All metal parts are powder coated

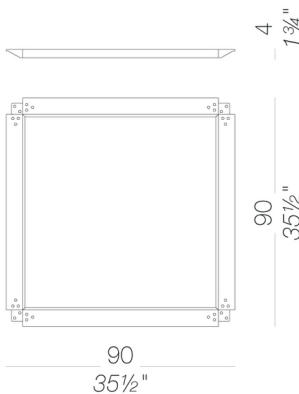
## legs



## seat frames



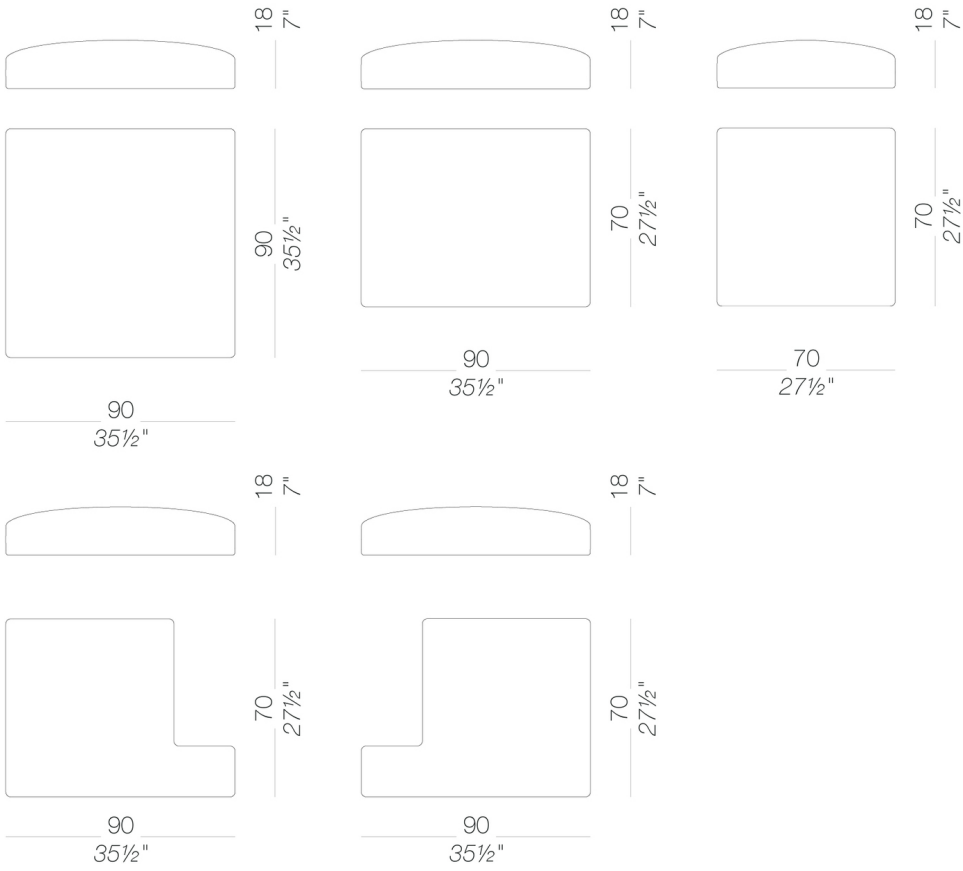
## table frames



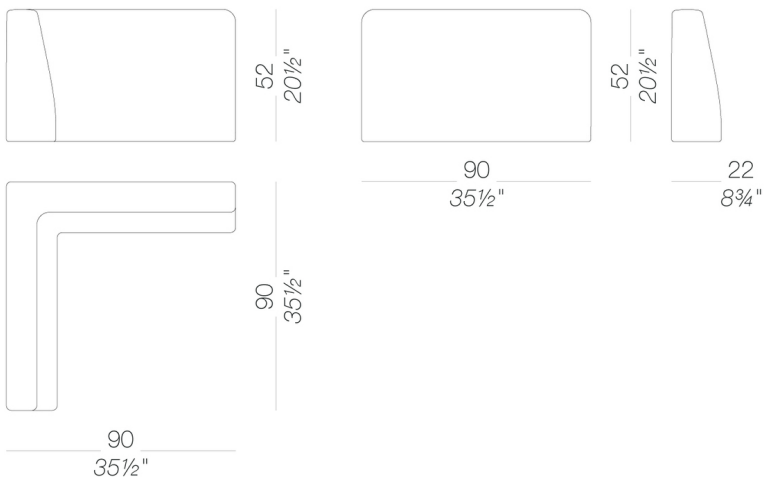
# ADD SOFT

Francesco Rota | 2018

## cushions



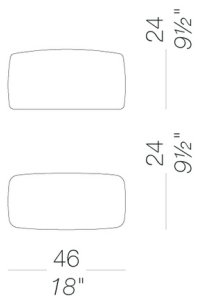
## backs



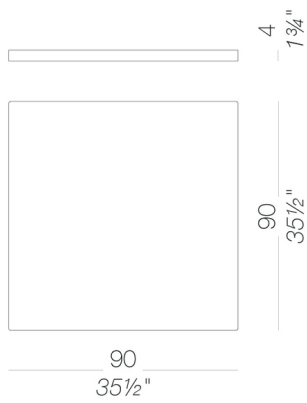
# ADD SOFT

Francesco Rota | 2018

## armrest



## table top



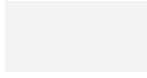
# ADD SOFT

Francesco Rota | 2018

## frame

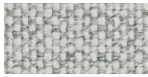


powder coating  
black  
1 Colors



powder coating  
white  
1 Colors

## upholstery



fabric  
Hallingdal 65 -  
Grade C  
58 Colors



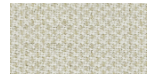
fabric  
Canvas 2 - Grade C  
45 Colors



fabric  
Steelcut Trio 3 -  
Grade D  
54 Colors



fabric  
Remix 3 - Grade C  
72 Colors



fabric  
Clara 2 - Grade C  
24 Colors



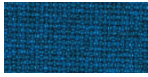
fabric  
Divina MD - Grade  
27 Colors



fabric  
DFiord 2 - Grade C  
39 Colors



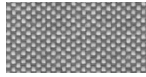
fabric  
Divina Melange 3 -  
Grade D  
38 Colors



fabric  
Medley - Grade A  
37 Colors



fabric  
Tonica 2 - Grade C  
39 Colors



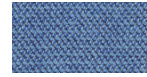
fabric  
Maya - Grade A  
43 Colors



fabric  
Jet - Grade A  
66 Colors



fabric  
Lapalma Smart -  
Grade C  
18 Colors



fabric  
Capture - Grade B  
43 Colors



fabric  
Crisp - Grade B  
40 Colors



fabric  
Iris - Grade B  
24 Colors



fabric  
Nattè - Grade B  
30 Colors



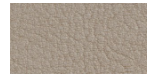
fabric  
Steelcut 3 - Grade D  
40 Colors



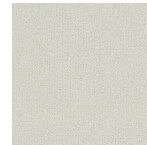
soft-leather  
Pelle Seta  
18 Colors



ecoleather  
GRIMM FR - Grade  
A  
32 Colors



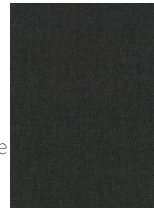
ecoleather  
Valencia - Grade B  
66 Colors



fabric  
Grain - Grade. B  
50 Colors

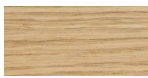


fabric  
Fortezza 68 - Grade  
B  
53 Colors

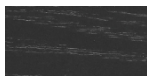


fabric  
Re-wool - Grade C  
21 Colors

## top



wood  
blanch oak  
1 Colors



wood  
black open pore  
1 Colors



laminate  
fenix 9/10  
2 Colors

**consult the portfolio for the range of colors, fabrics, eco-leather, soft-leather.**

### use and maintenance instructions

Clean all parts in wood, leather, fabric and metal with a damp cloth or a diluted neutral cleaner. Do not use cleaners with alcohol, bleach, solvent or abrasive products. Any liquid spilt on the product must be wiped up immediately. When lifting or moving the product, hold it on the structure and not under the seat. The product should not be subjected to unbalanced weights, as it is designed for a proper rest on the foothold (on four legs or on the base). Our company relieves from any responsibility in case of damage caused to fragile floors. Avoid any improper use of the product: do not step on the product, on the footrest or on the armrests. Avoid any movements that could compromise the proper functionality of the product or the safety of the users. Wood and leather, being natural materials, could be easily damaged. Small impurities or imperfections are within quality standard range. Do not expose the product to weather conditions or atmospheric agents, nor to heat sources over 40°C. Also products for outdoor use could be afflicted by atmospheric agents. The product could undergo possible exterior changes due to particular exposure to heat, humidity and saltiness. An appropriate and frequent maintenance and cleaning of the product enhances its durability. The product could change colour and shade, if exposed to direct sunlight. Maintenance has to be carried out by experienced staff. Dispose of the package only after assembling the product, in order to avoid the loss of ironmongery and components. Once the product has been dismantled, the product itself or its components must be given to the public garbage disposal system, according to the legislation in force.