

ADD T

Francesco Rota | 2016

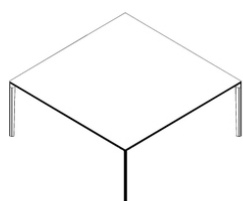


ADD T

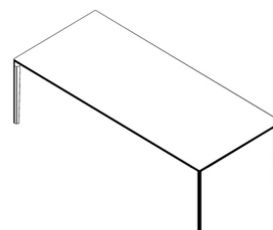
Francesco Rota | 2016

Writing, reading, and when the community is enlarged, working and meeting. Minimalist like a verb in its infinitive form, the ADD T table meets the requirements of any environment. With its lightness and great character, the table sparkles with life and its adaptability completes the ADD seating system. Thanks to its die-cast aluminium legs, which create a single corner solution or is extended with the addition of frames, multiple compositions can be created. Cables run, concealed and fixed under the profile. Sockets and power adaptors are inserted in the tabletop. For a calm day, where everything is user-friendly.

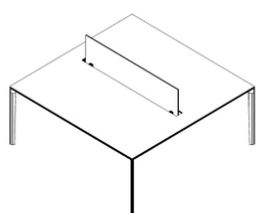




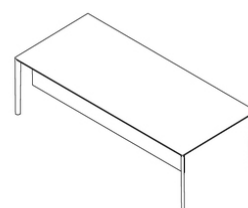
Square



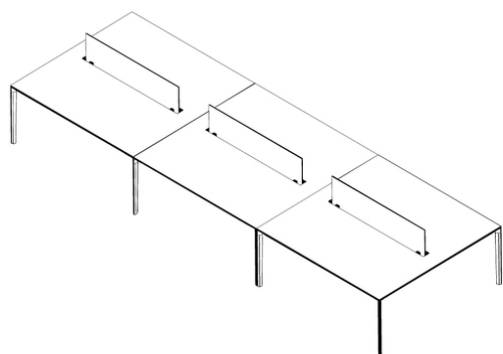
Rectangle



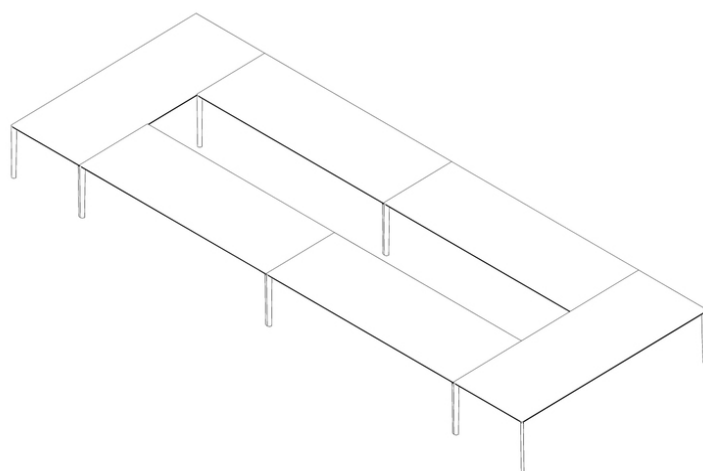
Privacy screen



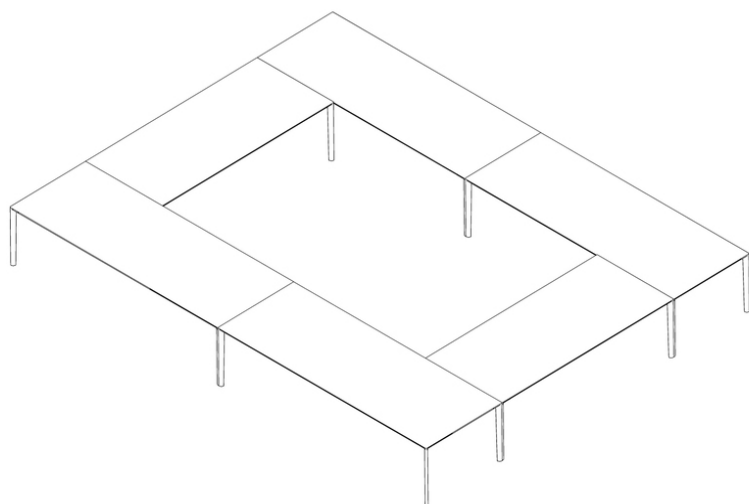
Modesty screen



Linked



Rectangular conference



Square conference

ADD T

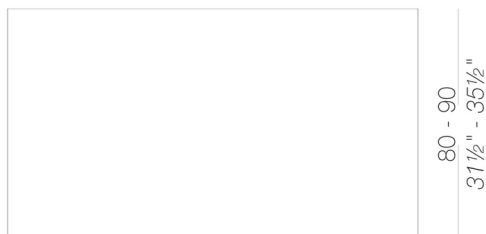
Francesco Rota | 2016

Modular system of tables with frame in aluminium extrusion and die-cast aluminium corner and linking legs, all powder coated, which allows several configurations. Tops available in HPL Fenix® 10 mm or veneered in wood in several finishes.

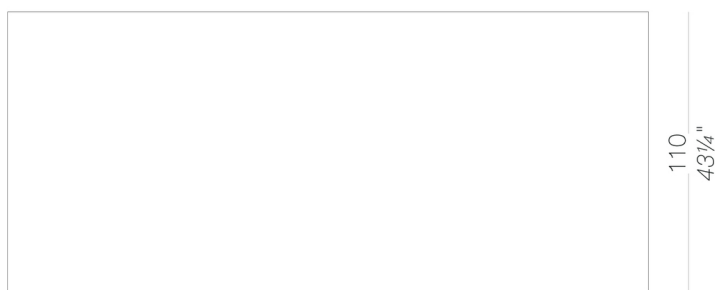
legs



tops



160 - 180 - 200
63" - 71" - 78³/₄"

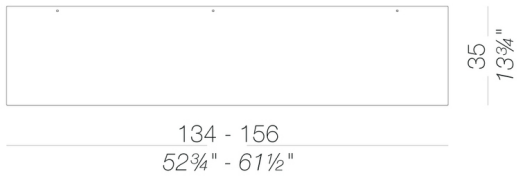


250 - 300
98¹/₂" - 118"

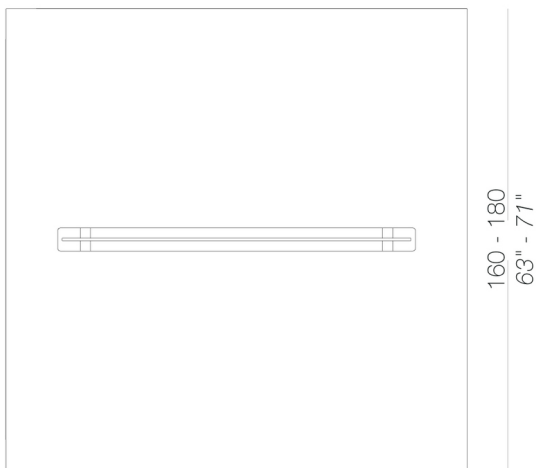
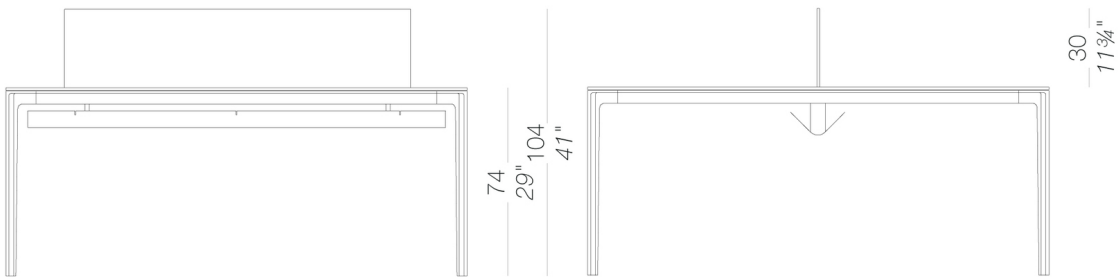
ADD T

Francesco Rota | 2016

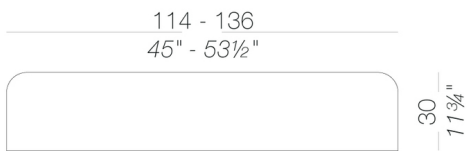
modesty panel



desk with partition panel and metal tray for cabling



partition panel



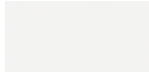
ADD T

Francesco Rota | 2016

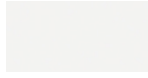
frame



powder coating
black
1 Colors



powder coating
white
1 Colors

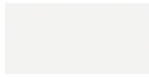


powder coating
white
1 Colors

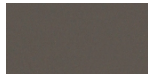
top



HPL 10 mm
black HPL fenix
1 Colors



HPL 10 mm
white HPL fenix
1 Colors



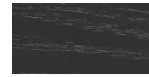
HPL 10 mm
HPL fenix grigio
Londra
1 Colors



HPL 10 mm
HPL fenix rosso
Jaipur
1 Colors



wood
blached oak
1 Colors

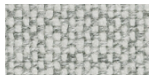


wood
black open pore
1 Colors

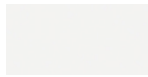
partition panel



HPL 10 mm
black HPL fenix
1 Colors



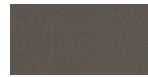
fabric
Hallingdal 65 -
Grade C
58 Colors



HPL 10 mm
white HPL fenix
1 Colors



fabric
Canvas 2 - Grade C
45 Colors



HPL 10 mm
HPL fenix grigio
Londra
1 Colors



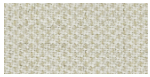
fabric
Steelcut Trio 3 -
Grade D
54 Colors



fabric
Remix 3 - Grade C
72 Colors



HPL 10 mm
HPL fenix rosso
Jaipur
1 Colors



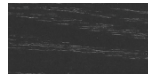
fabric
Clara 2 - Grade C
24 Colors



wood
blached oak
1 Colors



fabric
Fiord 2 - Grade C
39 Colors



wood
black open pore
1 Colors



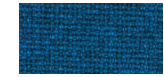
fabric
Divina MD - Grade D
27 Colors



fabric
Divina Melange 3 -
Grade D
38 Colors



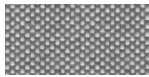
fabric
Tonica 2 - Grade C
39 Colors



fabric
Medley - Grade A
37 Colors



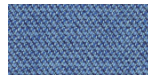
fabric
Jet - Grade A
66 Colors



fabric
Maya - Grade A
43 Colors



fabric
Lapalma Smart -
Grade C
18 Colors



fabric
Capture - Grade B
43 Colors



fabric
Crisp - Grade B
40 Colors



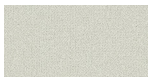
fabric
Nattè - Grade B
30 Colors



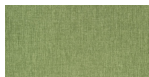
fabric
Iliris - Grade B
24 Colors



fabric
Steelcut 3 - Grade D
40 Colors



fabric
Grain - Grade. B
50 Colors



fabric
Fortezza 68 - Grade
B
53 Colors

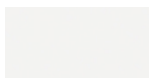


fabric
Re-wool - Grade C
21 Colors

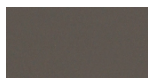
modesty panel



HPL 10 mm
black HPL fenix
1 Colors



HPL 10 mm
white HPL fenix
1 Colors



HPL 10 mm
HPL fenix grigio
Londra
1 Colors



HPL 10 mm
HPL fenix rosso
Jaipur
1 Colors

consult the portfolio for the range of colors, fabrics, eco-leather, soft-leather.

use and maintenance instructions

Clean all parts in wood, leather, fabric and metal with a damp cloth or a diluted neutral cleaner. Do not use cleaners with alcohol, bleach, solvent or abrasive products. Any liquid spilt on the product must be wiped up immediately. When lifting or moving the product, hold it on the structure and not under the seat. The product should not be subjected to unbalanced weights, as it is designed for a proper rest on the foothold (on four legs or on the base). Our company relieves from any responsibility in case of damage caused to fragile floors. Avoid any improper use of the product: do not step on the product, on the footrest or on the armrests. Avoid any movements that could compromise the proper functionality of the product or the safety of the users. Wood and leather, being natural materials, could be easily damaged. Small impurities or imperfections are within quality standard range. Do not expose the product to weather conditions or atmospheric agents, nor to heat sources over 40°C. Also products for outdoor use could be afflicted by atmospheric agents. The product could undergo possible exterior changes due to particular exposure to heat, humidity and saltiness. An appropriate and frequent maintenance and cleaning of the product enhances its durability. The product could change colour and shade, if exposed to direct sunlight. Maintenance has to be carried out by experienced staff. Dispose of the package only after assembling the product, in order to avoid the loss of ironmongery and components. Once the product has been dismantled, the product itself or its components must be given to the public garbage disposal system, according to the legislation in force.