

# UENO | T50

Takashi Shinozaki | 2006



# UENO

Takashi Shinozaki | 2006

UENO is named after one of the districts of Tokyo, famous for its park and splendid cherry blossom. This reference to the history of the city and the beauty of nature has given rise to UENO, a small table but also a stool, an essential combination of lines and surfaces, closed and open spaces. Its tubular metal profile effortlessly creates its shapes and softens its corners, which are always rounded. Takashi Shinozaki says that he was inspired by the stools at his school. This design project is definitely a school for thought.

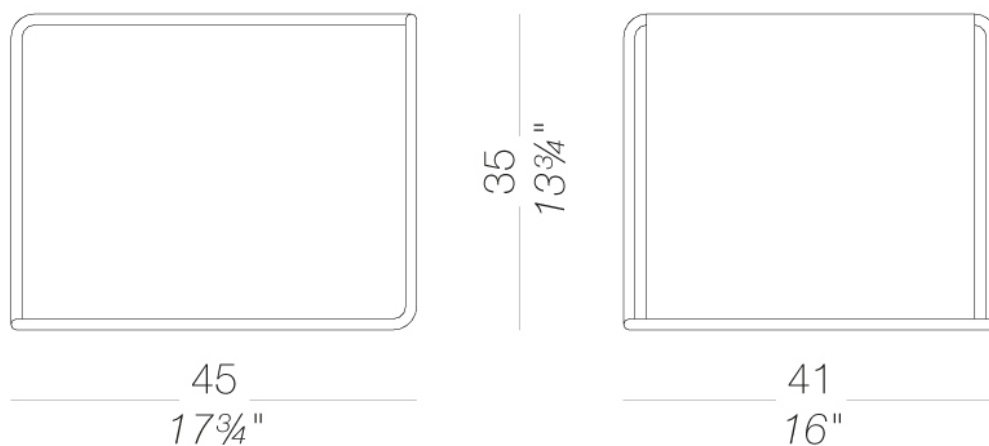


# UENO

Takashi Shinozaki | 2006

## | T50 small table-stool 45x41 H.35

Side nesting table that can be also used as small stacking stool. The frame is in sandblasted stainless steel Aisi 304 and the top / seat is in curved plywood wood veneered in several finishes or lacquered. Glides in polythene.



# UENO | T50

Takashi Shinozaki | 2006

## frame

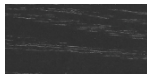


metal  
stainless steel  
1 Colors

## shell



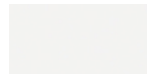
wood  
blanched oak  
1 Colors



wood  
black open pore  
1 Colors



wood  
oak dark walnut  
1 Colors



lacquered  
white lacquered  
1 Colors

**consult the portfolio for the range of colors, fabrics, eco-leather, soft-leather.**

### use and maintenance instructions

Clean all parts in wood, leather, fabric and metal with a damp cloth or a diluted neutral cleaner. Do not use cleaners with alcohol, bleach, solvent or abrasive products. Any liquid spilt on the product must be wiped up immediately. When lifting or moving the product, hold it on the structure and not under the seat. The product should not be subjected to unbalanced weights, as it is designed for a proper rest on the foothold (on four legs or on the base). Our company relieves from any responsibility in case of damage caused to fragile floors. Avoid any improper use of the product: do not step on the product, on the footrest or on the armrests. Avoid any movements that could compromise the proper functionality of the product or the safety of the users. Wood and leather, being natural materials, could be easily damaged. Small impurities or imperfections are within quality standard range. Do not expose the product to weather conditions or atmospheric agents, nor to heat sources over 40°C. Also products for outdoor use could be afflicted by atmospheric agents. The product could undergo possible exterior changes due to particular exposure to heat, humidity and saltiness. An appropriate and frequent maintenance and cleaning of the product enhances its durability. The product could change colour and shade, if exposed to direct sunlight. Maintenance has to be carried out by experienced staff. Dispose of the package only after assembling the product, in order to avoid the loss of ironmongery and components. Once the product has been dismantled, the product itself or its components must be given to the public garbage disposal system, according to the legislation in force.